

## 7.3 Injector Core Policy

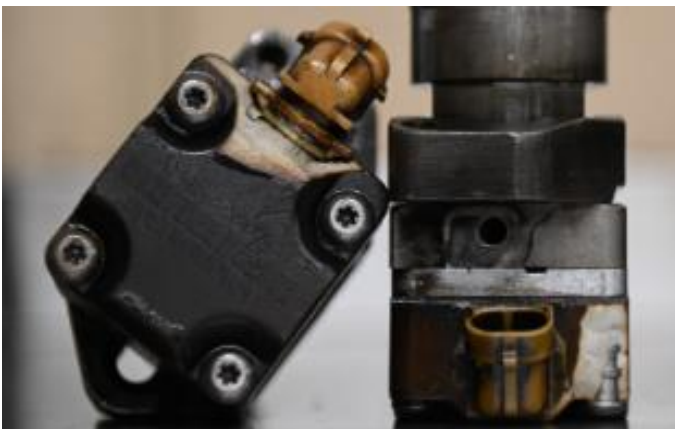
All cores must be returned within 30 days from shipment delivery. A late fee will be charged unless prior arrangements have been made. Injector cores must be returned in rebuildable condition.

The following criteria by which injector cores will be assessed are as follows:

- Exposure to vegetable oil or homemade diesel as a fuel source.
- Burned from an engine fire.
- Damage Externally such as broken solenoids or connectors, damage to caps from improper disassembly, and rust build-up due to extended exposure to water or coolant.
- Damage Internally such as missing parts from a prior disassembly, extended exposure to water or coolant resulting in heavy rust, catastrophic failure due to internal injector part failure, ingestion of foreign debris from an oil or fuel system failure.

YOU WILL BE CONTACTED FOR ANY SEVERELY DAMAGED OR NON-REPAIRABLE CORES TO DISCUSS RETURN OPTIONS.

\*7.3L Damaged Solenoid or Connector - \$25 each



Broken Solenoids



Broken Connectors